

MPS Catalog Number

**H2 90 10 033 MX SS 017**

Date: 03/13/2024

**End Fittings**

Tower End Fitting:

Gain / 12 deg / Steel

Line End Fitting:

2 HL Drop Tongue / Galv. Ductile Iron

**Material**

Corona Ring (Line):

None

Corona Rings are recommended for applications of 230 kV and above

Mounting Angle:

12 deg

Number of Sheds:

17

Rod Diameter:

2.5 in

Weight Estimate:

52.2 lbs

24 kg

**Dimensional Values**

Section Length (L):

43.5 in 1,105 mm

Rubber Length (X):

33 in 838 mm

Shed spacing (S):

1.95 in 50 mm

Shed Projection (P):

1.86 in 47 mm

Dry Arc Distance:

35.4 in 899 mm

Leakage Distance:

90.3 in 2,294 mm

**Electricals Values**

60 Hz dry Flashover (Min. Withstand):

343 kV 322 kV

60 Hz Wet Flashover (Min. Withstand):

317 kV 247 kV

CIFO Positive (Min. Withstand):

589 kV 526 kV

CIFO Negative (Min. Withstand):

678 kV 563 kV

**Mechanical Values**

Max. Design Cant. Load (MDCL):

2,170 lbs 9.7 kN

Specified Cant. Load (SCL):

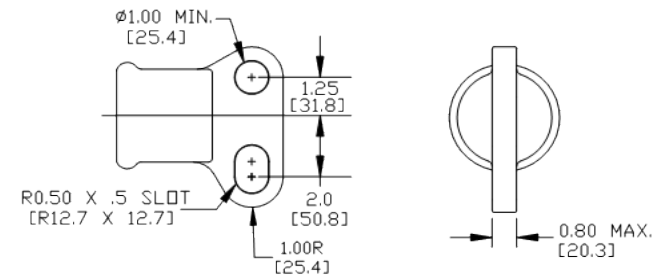
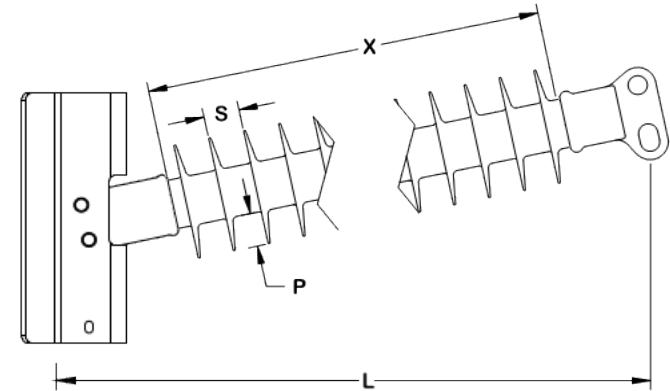
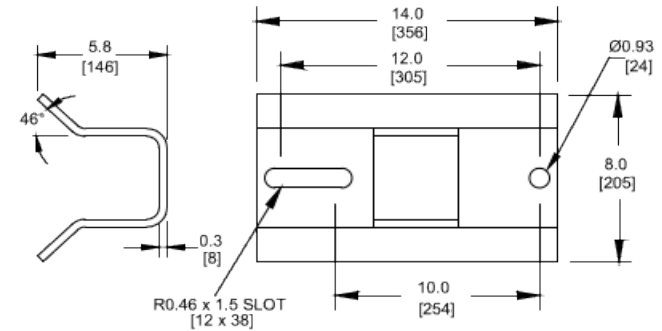
4,340 lbs 19.3 kN

Specified Tensile Load (STL):

15,000 lbs 66.7 kN

This drawing contains confidential information that is the property of MacLean Power, L.L.C. ("MacLean"). Use of MacLean's confidential information without MacLean's express written consent is strictly prohibited and may expose you to legal liability. If you believe that you received this material in error, please destroy it or return it to "MacLean Power, L.L.C., 7801 Park Place Rd., York, South Carolina 29745, USA."

Notes:



Dimension: inches [millimeters]

NOTE: Drawing not actual depiction of insulator appearance.

Silicone rubber sheath and sheds complies with applicable ANSI and IEC standards.

Prepared By: Evan Huber