

MPS Catalog Number

**H2 90 10 037 MX SS 019**

Date: 03/13/2024

**End Fittings**

Tower End Fitting:

Gain / 12 deg / Steel

Line End Fitting:

2 HL Drop Tongue / Galv. Ductile Iron

**Material**

Corona Ring (Line):

None

Corona Rings are recommended for applications of 230 kV and above

Mounting Angle:

12 deg

Number of Sheds:

19

Rod Diameter:

2.5 in

Weight Estimate:

54.5 lbs

25 kg

**Dimensional Values**

Section Length (L):

47.4 in 1,204 mm

Rubber Length (X):

37 in 940 mm

Shed spacing (S):

1.95 in 50 mm

Shed Projection (P):

1.86 in 47 mm

Dry Arc Distance:

39.3 in 998 mm

Leakage Distance:

100.9 in 2,562 mm

**Electricals Values**

60 Hz dry Flashover (Min. Withstand):

378 kV 355 kV

60 Hz Wet Flashover (Min. Withstand):

350 kV 274 kV

CIFO Positive (Min. Withstand):

651 kV 581 kV

CIFO Negative (Min. Withstand):

733 kV 619 kV

**Mechanical Values**

Max. Design Cant. Load (MDCL):

1,995 lbs 8.9 kN

Specified Cant. Load (SCL):

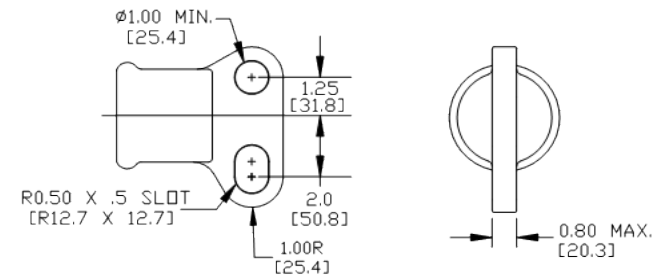
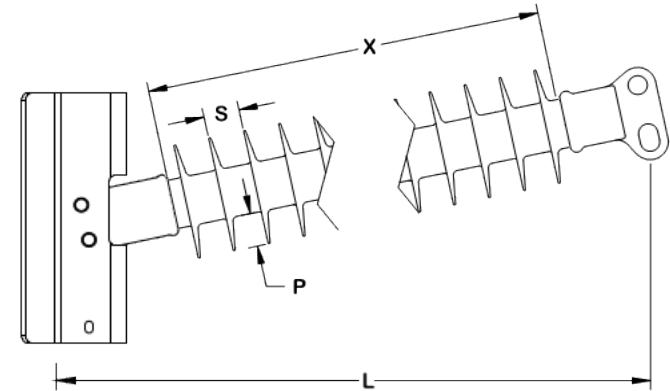
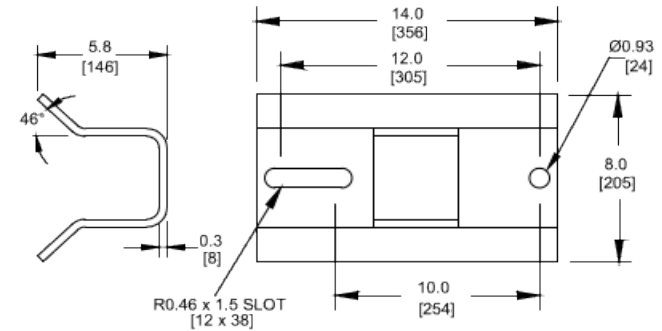
3,990 lbs 17.7 kN

Specified Tensile Load (STL):

15,000 lbs 66.7 kN

This drawing contains confidential information that is the property of MacLean Power, L.L.C. ("MacLean"). Use of MacLean's confidential information without MacLean's express written consent is strictly prohibited and may expose you to legal liability. If you believe that you received this material in error, please destroy it or return it to "MacLean Power, L.L.C., 7801 Park Place Rd., York, South Carolina 29745, USA."

Notes:



Dimension: inches [millimeters]

NOTE: Drawing not actual depiction of insulator appearance.

Silicone rubber sheath and sheds complies with applicable ANSI and IEC standards.

Prepared By: Evan Huber