

MPS Catalog Number

H2 90 10 041 MX SS 021

Date: 03/13/2024

End Fittings

Tower End Fitting:

Gain / 12 deg / Steel

Line End Fitting:

2 HL Drop Tongue / Galv. Ductile Iron

Material

Corona Ring (Line):

None

Corona Rings are recommended for applications of 230 kV and above

Mounting Angle:

12 deg

Number of Sheds:

21

Rod Diameter:

2.5 in

Weight Estimate:

56.7 lbs

26 kg

Dimensional Values

Section Length (L):

51.3 in 1,303 mm

Rubber Length (X):

41 in 1,041 mm

Shed spacing (S):

1.95 in 50 mm

Shed Projection (P):

1.86 in 47 mm

Dry Arc Distance:

43.2 in 1,096 mm

Leakage Distance:

111.4 in 2,830 mm

Electricals Values

60 Hz dry Flashover (Min. Withstand):

412 kV 387 kV

60 Hz Wet Flashover (Min. Withstand):

382 kV 300 kV

CIFO Positive (Min. Withstand):

712 kV 635 kV

CIFO Negative (Min. Withstand):

785 kV 674 kV

Mechanical Values

Max. Design Cant. Load (MDCL):

1,830 lbs 8.1 kN

Specified Cant. Load (SCL):

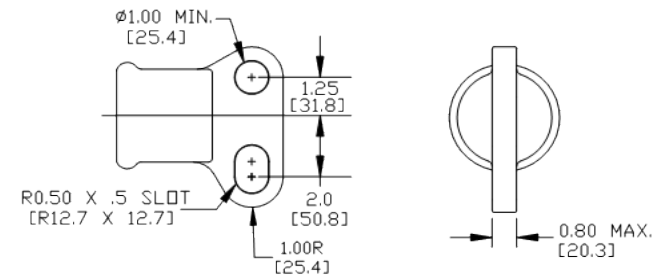
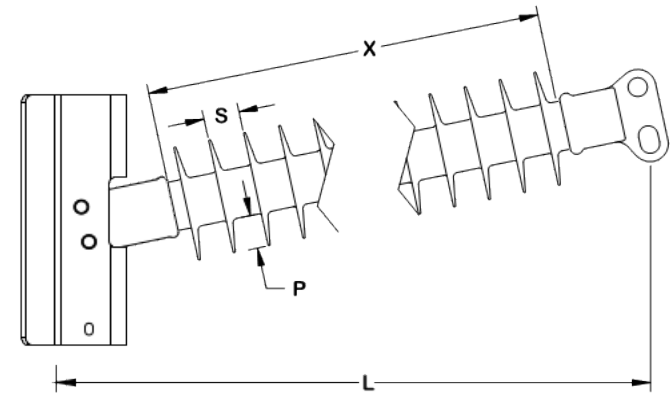
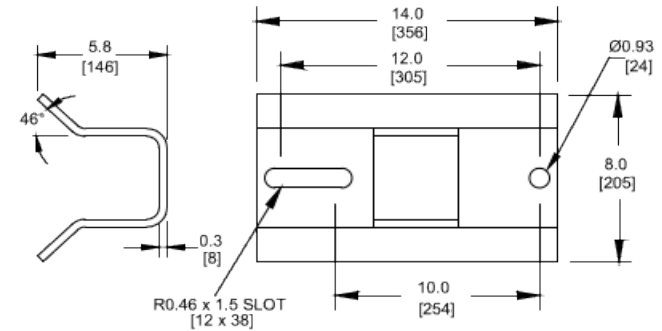
3,660 lbs 16.3 kN

Specified Tensile Load (STL):

15,000 lbs 66.7 kN

This drawing contains confidential information that is the property of MacLean Power, L.L.C. ("MacLean"). Use of MacLean's confidential information without MacLean's express written consent is strictly prohibited and may expose you to legal liability. If you believe that you received this material in error, please destroy it or return it to "MacLean Power, L.L.C., 7801 Park Place Rd., York, South Carolina 29745, USA."

Notes:



Dimension: inches [millimeters]

NOTE: Drawing not actual depiction of insulator appearance.

Silicone rubber sheath and sheds complies with applicable ANSI and IEC standards.

Prepared By: Evan Huber