

MPS Catalog Number

**H2 90 10 045 MX SS 023**

Date: 03/13/2024

**End Fittings**

Tower End Fitting:

Gain / 12 deg / Steel

Line End Fitting:

2 HL Drop Tongue / Galv. Ductile Iron

**Material**

Corona Ring (Line):

None

Corona Rings are recommended for applications of 230 kV and above

Mounting Angle:

12 deg

Number of Sheds:

23

Rod Diameter:

2.5 in

Weight Estimate:

59 lbs

27 kg

**Dimensional Values**

Section Length (L):

55.2 in 1,402 mm

Rubber Length (X):

45 in 1,143 mm

Shed spacing (S):

1.95 in 50 mm

Shed Projection (P):

1.86 in 47 mm

Dry Arc Distance:

45.1 in 1,146 mm

Leakage Distance:

122 in 3,099 mm

**Electricals Values**

60 Hz dry Flashover (Min. Withstand):

430 kV 403 kV

60 Hz Wet Flashover (Min. Withstand):

398 kV 313 kV

CIFO Positive (Min. Withstand):

743 kV 662 kV

CIFO Negative (Min. Withstand):

810 kV 701 kV

**Mechanical Values**

Max. Design Cant. Load (MDCL):

1,665 lbs 7.4 kN

Specified Cant. Load (SCL):

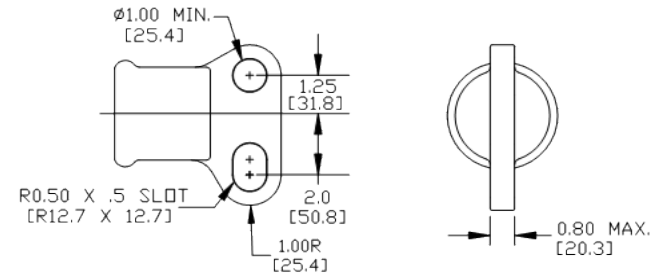
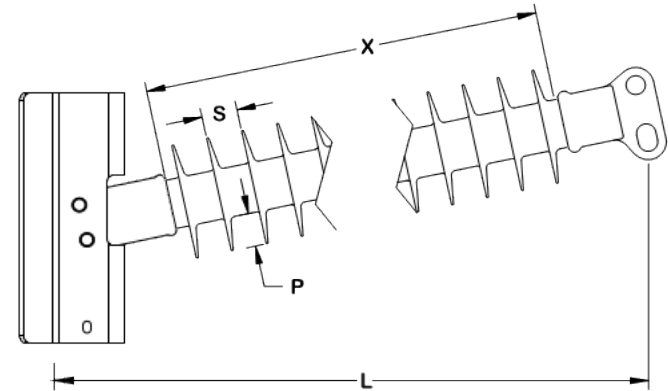
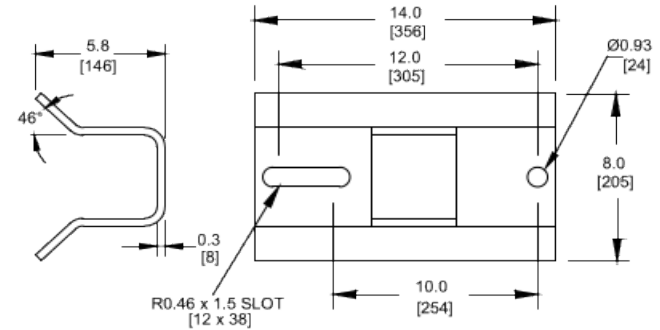
3,330 lbs 14.8 kN

Specified Tensile Load (STL):

15,000 lbs 66.7 kN

This drawing contains confidential information that is the property of MacLean Power, L.L.C. ("MacLean"). Use of MacLean's confidential information without MacLean's express written consent is strictly prohibited and may expose you to legal liability. If you believe that you received this material in error, please destroy it or return it to "MacLean Power, L.L.C., 7801 Park Place Rd., York, South Carolina 29745, USA."

Notes:



Dimension: inches [millimeters]

NOTE: Drawing not actual depiction of insulator appearance.

Silicone rubber sheath and sheds complies with applicable ANSI and IEC standards.

Prepared By: Evan Huber