

MPS Catalog Number:

Date:

**H3 90 10 040 AX SS 015**

05/20/2021

**End Fittings**

Tower End Fitting:

Gain/12"-14" Hole Spacing

Anchor / Galv. Ductile Iron

Line End Fitting:

2 HL Drop Tongue / Galv. Ductile Iron

**Material**

Corona Ring (Tower):

None

Corona Ring (Line):

None

Corona Rings are recommended for applications of 230 kV and above

Mounting Angle:

17 deg

Number of Sheds:

15

Rod Diameter:

3 in

Weight Estimate:

95.7 lbs

43 kg

**Dimensional Values**

Section Length (L):

53.7 in 1,364 mm

Rubber Length (X):

40 in 1,016 mm

Shed spacing (S):

2.5 in 64 mm

Shed Projection (P):

2.7 in 68 mm

Dry Arc Distance:

43 in 1,092 mm

Leakage Distance:

113 in 2,870 mm

**Electricals Values**

60 Hz dry Flashover (Min. Withstand):

411 kV 386 kV

60 Hz Wet Flashover (Min. Withstand):

381 kV 299 kV

CIFO Positive (Min. Withstand):

709 kV 633 kV

CIFO Negative (Min. Withstand):

783 kV 672 kV

**Mechanical Values**

Max. Design Cant. Load (MDCL):

3,026 lbs 13.5 kN

Specified Cant. Load (SCL):

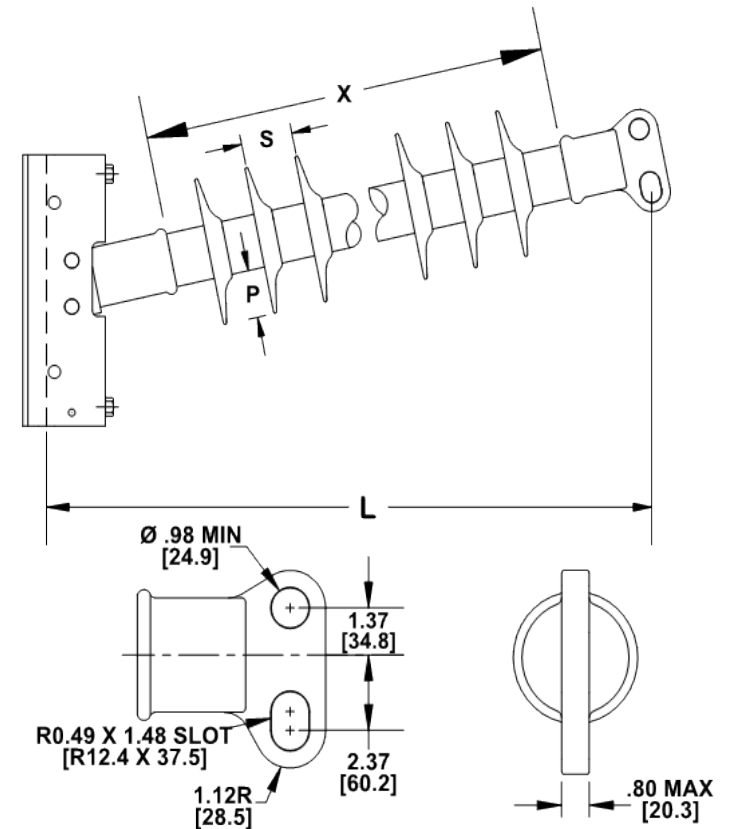
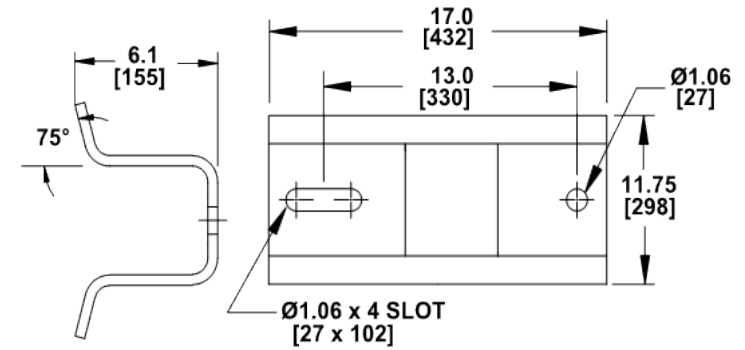
6,052 lbs 26.9 kN

Specified Tensile Load (STL):

20,000 lbs 89.0 kN

This drawing contains confidential information that is the property of MacLean Power, L.L.C. ("MacLean"). Use of MacLean's confidential information without MacLean's express written consent is strictly prohibited and may expose you to legal liability. If you believe that you received this material in error, please destroy it or return it to "MacLean Power, L.L.C., 7801 Park Place Rd., York, South Carolina 29745, USA."

Notes:



Dimension: inches [millimeters]

NOTE: Drawing not actual depiction of insulator appearance.

Silicone rubber sheath and sheds complies with applicable ANSI and IEC standards.

Prepared By: Laurel Wallace