



**MacLean**<sup>TM</sup>  
POWER SYSTEMS

MacLean Power Systems  
7801 Park Place Rd., York, SC 29745  
USA (803) 628-2100

MPS Catalog Number

**H7 40 U0 014 MX SS 007**

Revision: PD-4

Date 1/23/2023

**End Fittings**

Tower End Fitting:

3/4"-10 Round Base (Galv. Duct. Iron)

Line End Fitting:

Universal Trunnion (Aluminum)

**Material**

Number of Sheds:

7

Rod Diameter:

1-3/4"

Weight Estimate:

16.7 lbs

7.6 kg

**Dimensional Values**

Section Length (L):

22.9 in 582 mm

Rubber Length (X):

13.8 in 351 mm

Shed Height (P):

2.4 in 62 mm

Shed Diameter (B):

6.9 in 175 mm

Shed Spacing (S):

2.0 in 52 mm

Dry Arc Distance:

16.7 in 423 mm

Leakage Distance:

45.0 in 1142 mm

**Electricals Values**

60 Hz dry Flashover:

187 kV

Min. Withstand

162 kV

60 Hz Wet Flashover:

153 kV

Min. Withstand

115 kV

Positive CIFO:

293 kV

Min. Withstand

258 kV

Negative CIFO:

343 kV

Min. Withstand

291 kV

**Mechanical Values**

Max. Design Cant. Load (MDCL):

1,350 lbs

6. kN

Specified Cant. Load (SCL):

2,800 lbs

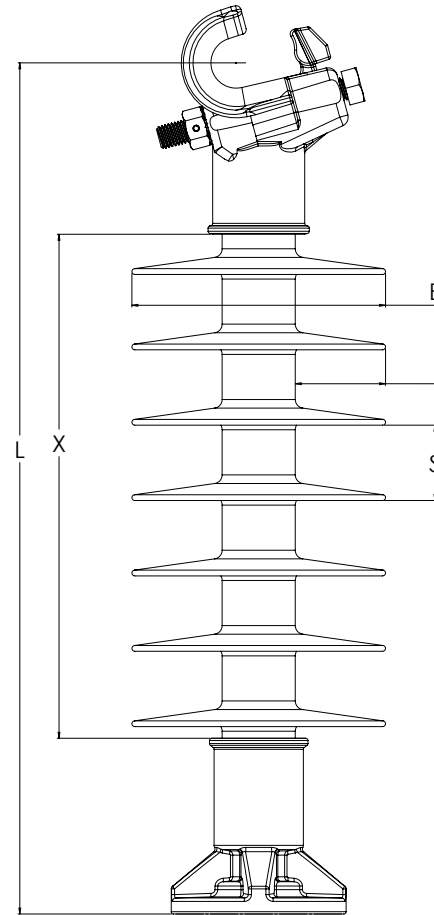
12.5 kN

Specified Tensile Load (STL):

5,000 lbs

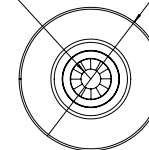
22.2 kN

This drawing contains confidential information that is the property of MacLean Power, L.L.C. ("MacLean"). Use of MacLean's confidential information without MacLean's express written consent is strictly prohibited and may expose you to legal liability. If you believe that you received this material in error, please destroy it or return it to "MacLean Power, L.L.C., 7801 Park Place Rd., York, South Carolina 29745, USA."



$\phi$  0.66  $\nabla$  1.17  
3/4-10 UNC - 2B  $\nabla$  1.00

$\phi$  4.75



Dimension: inches [millimeters]

NOTE: Drawing not actual depiction of insulator appearance

Insulator assembly complies with ANSI C.29.18 and CSA C411.6 Standards

**Part Marking:**

MPS WO#

H7 40 U0 014 MX SS 007

46 kV

MDCL 1,350 lbs/6.0 kN