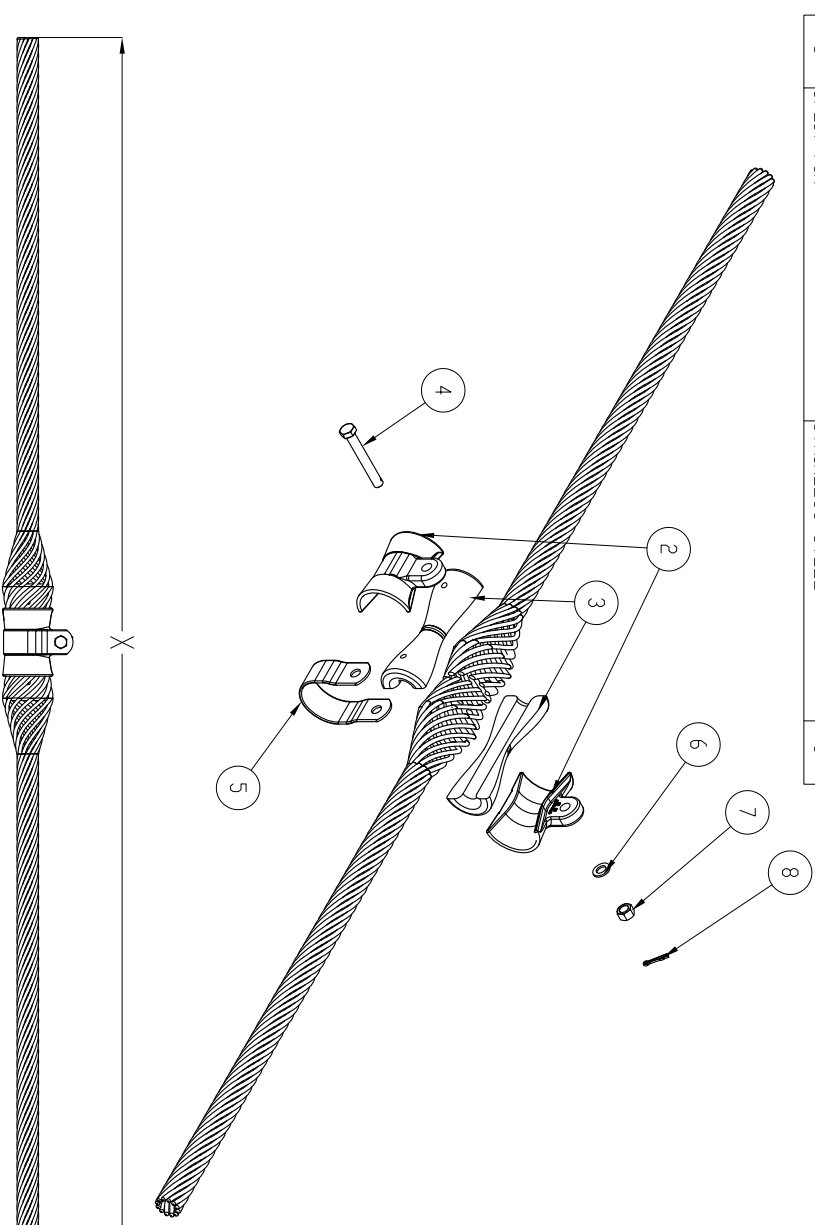


PAPER SIZE		DRAWING NUMBER	
C		2400-504	
REV.	ECO BY	ECO DATE	ECO NUMBER
1	KMK	3/07/18	ADDED NOTES FOR HIGH TEMP VERSION
2	KMK	3/08/18	ADDED CLAMP DIM CHGRT.
REVISIONS			

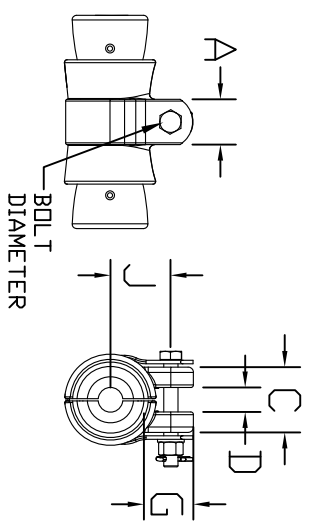
ITEM NO.	DESCRIPTION	MATERIAL	QTY.
1	ARA-795-26 -R_HSC_INSL1	ALUMINUM ALLOY	-
2	SUSPENSION BODY CLAMP	ALUMINUM ALLOY	2
3	RUBBER INSERTS	EPDM RUBBER OR SILICONE (HT)	2
4	BOLT	GALVANIZED STEEL	1
5	HSC STRAP	ALUMINUM ALLOY	1
6	LOCKWASHER	GALVANIZED STEEL	1
7	NUT	GALVANIZED STEEL	1
8	SPLIT PIN	STAINLESS STEEL	1



CONDUCTOR RANGE	A	B	C	D	D	G	J	BOLT DIA.	VERTICAL RATING LBS.
0.543 - 0.645'	1.75'	2.16'	0.72'	1.91'	1.94'	0.63'	10,000		
0.646 - 0.750'	1.75'	2.25'	0.75'	1.88'	2.16'	0.63'	15,000		
0.751 - 0.907'	2.00'	2.69'	0.88'	2.00'	2.34'	0.63'	20,000		
0.908 - 1.005'	2.00'	2.94'	0.88'	2.00'	2.53'	0.63'	20,000		
1.006 - 1.208'	2.25'	3.50'	1.19'	2.13'	2.70'	0.63'	25,000		
1.209 - 1.355'	2.25'	3.63'	1.25'	2.38'	3.16'	0.75'	25,000		
1.356 - 1.557'	2.25'	4.12'	1.38'	2.25'	2.97'	0.75'	25,000		
1.558 - 1.882'	2.50'	4.69'	2.25'	2.38'	3.19'	0.75'	25,000		

MAXIMUM OPERATING TEMPERATURE	STANDARD	HIGH TEMP -HT
	200 °C	250 °C

FOR HIGH TEMPERATURE CLAMPS ADD THE SUFFIX '-HT' (EXAMPLE: HSC-1517-HT-N)



No Fitting	Conductor Range (In.)	Nominal Conductors	X Length (In.)	Rod Dia. (In.)	Std. Pack	Wt. (Lbs.)*	Color Code
HSC-0543-N	0.543 - 0.555	2/0, 3/4AWAC 3/4AWAC	44	0.182	18	53	BLACK
HSC-0556-N	0.556 - 0.573	4/0, 1/0	44	0.182	18	55	WHITE
HSC-0574-N	0.574 - 0.594	266.8, 7-19W 7-19W AAC	45	0.182	18	56	BROWN
HSC-0595-N	0.595 - 0.606	266.8, 18/1AWAC	46	0.182	18	53	ORANGE
HSC-0607-N	0.607 - 0.619	266.8, 18/1 18/1	46	0.182	18	56	PURPLE
HSC-0620-N	0.620 - 0.645	266.8, 26/7 26/7	50	0.182	18	61	RED
HSC-0646-N	0.646 - 0.673	336.4, 19-34W AAC	54	0.204	15	60	BLUE
HSC-0674-N	0.674 - 0.690	300, 26/7	54	0.204	15	61	GREEN
HSC-0691-N	0.691 - 0.710	300, 30/7	54	0.204	15	64	YELLOW
HSC-0711-N	0.711 - 0.731	336.4, 26/7	55	0.204	15	65	BLACK
HSC-0732-N	0.732 - 0.750	336.4, 30/7	56	0.204	15	66	WHITE
HSC-0751-N	0.751 - 0.768	397.5, 26/7 AWAC	60	0.25	12	68	BROWN
HSC-0769-N	0.769 - 0.795	397.5, 26/7	60	0.25	12	68	ORANGE
HSC-0796-N	0.796 - 0.824	477, 18/1	61	0.25	12	73	PURPLE
HSC-0825-N	0.825 - 0.845	477, 26/7 AWAC	64	0.25	12	76	RED
HSC-0846-N	0.846 - 0.870	477, 26/7	64	0.25	12	76	BLUE
HSC-0871-N	0.871 - 0.893	600, 37W AAC	65	0.25	12	81	GREEN
HSC-0894-N	0.894 - 0.907	500, 30/7	65	0.25	12	82	GREEN
HSC-0908-N	0.908 - 0.920	556.5, 24/7	66	0.25	9	81	YELLOW
HSC-0921-N	0.921 - 0.937	556.5, 26/7	66	0.25	9	81	BLACK
HSC-0938-N	0.938 - 0.962	605, 24/7	67	0.25	9	81	WHITE
HSC-0963-N	0.963 - 0.986	636, 24/7	68	0.25	9	87	BROWN
HSC-0987-N	0.987 - 1.005	636, 26/7	69	0.25	9	87	ORANGE
HSC-1006-N	1.006 - 1.022	636, 30/19	70	0.31	6	73	PURPLE
HSC-1023-N	1.023 - 1.040	795, 37-61W AAC	78	0.31	6	75	RED
HSC-1041-N	1.041 - 1.074	715.5, 26/7	78	0.31	6	75	BLUE
HSC-1075-N	1.075 - 1.090	874.5, 37W	78	0.31	6	78	GREEN
HSC-1091-N	1.091 - 1.118	795, 26/7	78	0.31	6	78	YELLOW
HSC-1119-N	1.119 - 1.136	954, 37W AAC	78	0.31	6	78	BLACK
HSC-1137-N	1.137 - 1.152	795, 30/19	78	0.31	6	78	WHITE
HSC-1153-N	1.153 - 1.175	954, 45/7	82	0.31	6	79	BROWN
HSC-1176-N	1.176 - 1.208	954, 54/7	82	0.31	6	79	ORANGE
HSC-1209-N	1.209 - 1.226	1113, 61W	82	0.365	3	55	PURPLE
HSC-1227-N	1.227 - 1.259	1192.5, 61W AAC	88	0.365	3	55	RED
HSC-1260-N	1.260 - 1.286	1113, 48/7	88	0.365	3	58	BLUE
HSC-1287-N	1.287 - 1.314	1272, 61W	88	0.365	3	58	GREEN
HSC-1315-N	1.315 - 1.355	1272, 45/7	88	0.365	3	58	YELLOW
HSC-1356-N	1.356 - 1.394	1272, 54/19	88	0.365	3	60	BLACK
HSC-1395-N	1.395 - 1.416	1351, 54/19 AWAC	88	0.365	3	61	WHITE
HSC-1417-N	1.417 - 1.442	1510.5, 61W	88	0.365	3	62	BROWN
HSC-1443-N	1.443 - 1.477	1431, 54/19	88	0.365	3	64	ORANGE
HSC-1478-N	1.478 - 1.516	1590, 45/7	88	0.365	3	64	PURPLE
HSC-1517-N	1.517 - 1.557	1590, 54/19	88	0.365	3	64	RED
HSC-1558-N	1.558 - 1.579	1780, 72/7	88	0.365	3	66	BLUE
HSC-1580-N	1.580 - 1.612	1780, 84/19	100	0.365	3	78	GREEN
HSC-1613-N	1.613 - 1.650	2000, 91W	100	0.365	3	79	YELLOW
HSC-1651-N	1.651 - 1.688	2000, 72/7	100	0.365	3	83	BLACK
HSC-1689-N	1.689 - 1.711	2000, 84/19	100	0.365	3	83	WHITE
HSC-1712-N	1.712 - 1.752	2129, 84/19	100	0.365	3	83	BROWN
HSC-1753-N	1.753 - 1.790	2156, 84/19	100	0.365	3	83	ORANGE
HSC-1791-N	1.791 - 1.828	2300, 84/19	100	0.365	3	83	PURPLE
HSC-1829-N	1.829 - 1.882	2515MCM, 76/19	100	0.365	3	85	RED

*Weight per each standard pack

THIS DRAWING CONTAINS CONFIDENTIAL INFORMATION THAT IS THE PROPERTY OF WACLEAN POWER. ANY REPRODUCTION OR USE OF THIS DRAWING WITHOUT WACLEAN'S EXPRESS WRITTEN CONSENT IS STRICTLY PROHIBITED AND MAY EXPOSE YOU TO LEGAL LIABILITY. IF YOU BELIEVE THAT YOU RECEIVED THIS MATERIAL IN ERROR, PLEASE DESTROY IT OR RETURN IT TO WACLEAN POWER, LLC, 7801 PARK PLACE RD, YORK, SOUTH CAROLINA 29745, USA.

CATALOG NUMBER	CUSTOMER NUMBER	PART NUMBER	DRAWING NUMBER
			2400-504
PHYSICAL PROPERTIES		SCALE: 1 OF 1	
MATERIAL:	SEE TABLE	DRAWING DESCRIPTION: HELICAL SUSPENSION CLAMP	
APPROX. WEIGHT:	IN3	DESIGN DATE:	
VOLUME:	IN3	ENGINEER:	
		APPROVED:	
		SCALE:	



DO NOT SCALE DRAWING	DO NOT MANUALLY UPDATE
CAD GENERATED DRAWING	