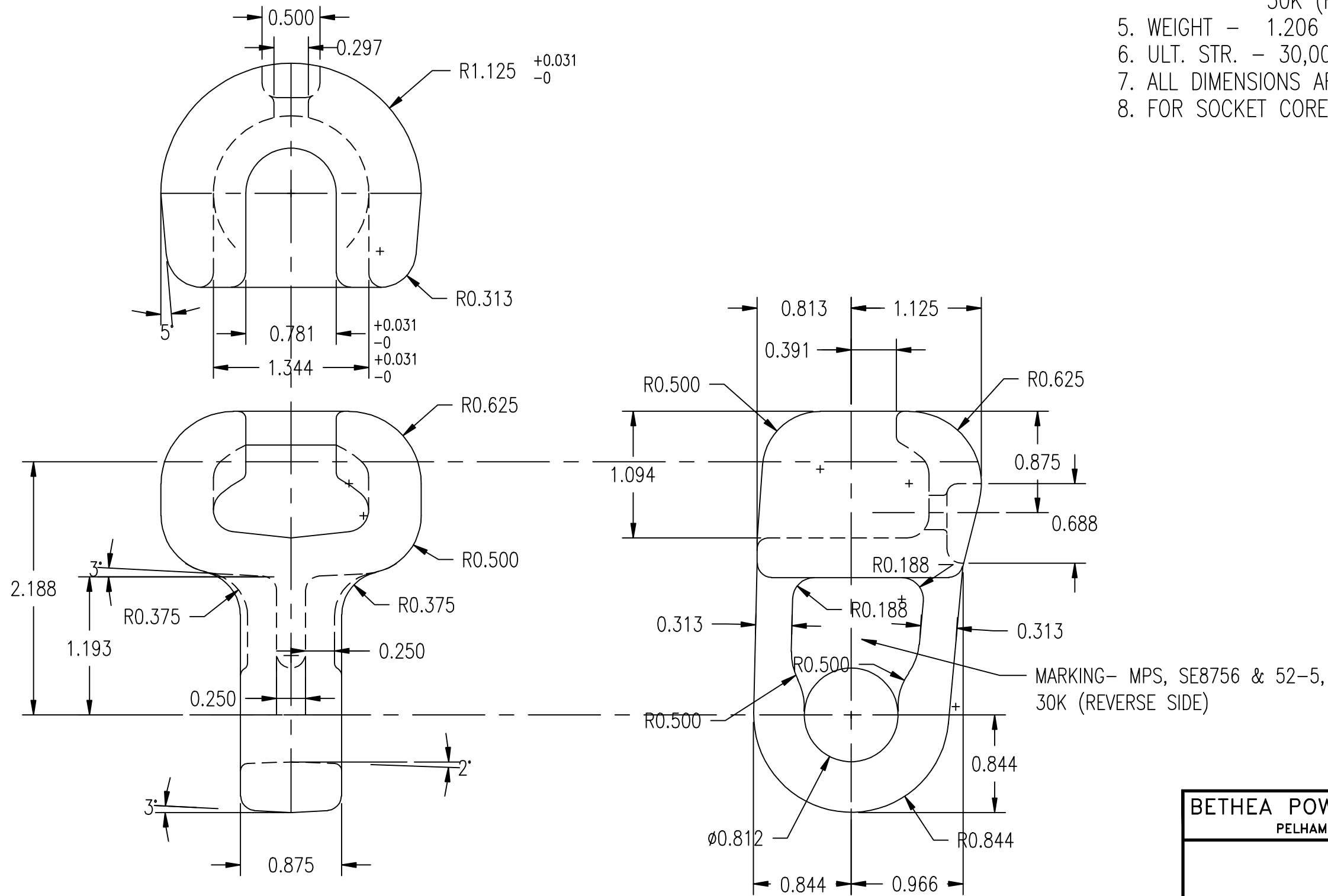


REVISIONS

NO.	DATE	DESCRIPTION	BY	CKD
1	09/25/01	REDESIGNED, DWG# WAS MB122, R6 SH7/7	CDH	

NOTES:

1. MATERIAL: NODULAR IRON, GRADE 604018.
2. USE 1/8" PER FOOT SHRINK SCALE
3. DRAFT - 3° UNLESS OTHERWISE SHOWN
4. MARKING - MPS, SE-875-6, &52-5, 30K (REVERSE SIDE)
5. WEIGHT - 1.206 LBS.
6. ULT. STR. - 30,000 LBS.
7. ALL DIMENSIONS ARE IN INCHES
8. FOR SOCKET CORE DETAIL SEE DWG. MA-15



BETHEA POWER PRODUCTS
 PELHAM, ALABAMA
 A MacLean Power Systems Co.

SE-875-6
 SOCKET EYE DETAIL

ENG. REF.

DATE: 3/19/79	SCALE: NONE	NO. MB-122-2	R 1	SH. 1
DWN. BY: BI	CKD. BY:	APR. BY:	OF 1	