

MPS Catalog Number:

MG300Z

Rev:		A
Date:		4/9/2026
IEC Class:		IEC 24
Ball and Socket Coupling:	w/ Zinc Sleeve	24
Shell Profile:		Standard
Weight:	23.4 lbs	10.6 kg

DIMENSIONS

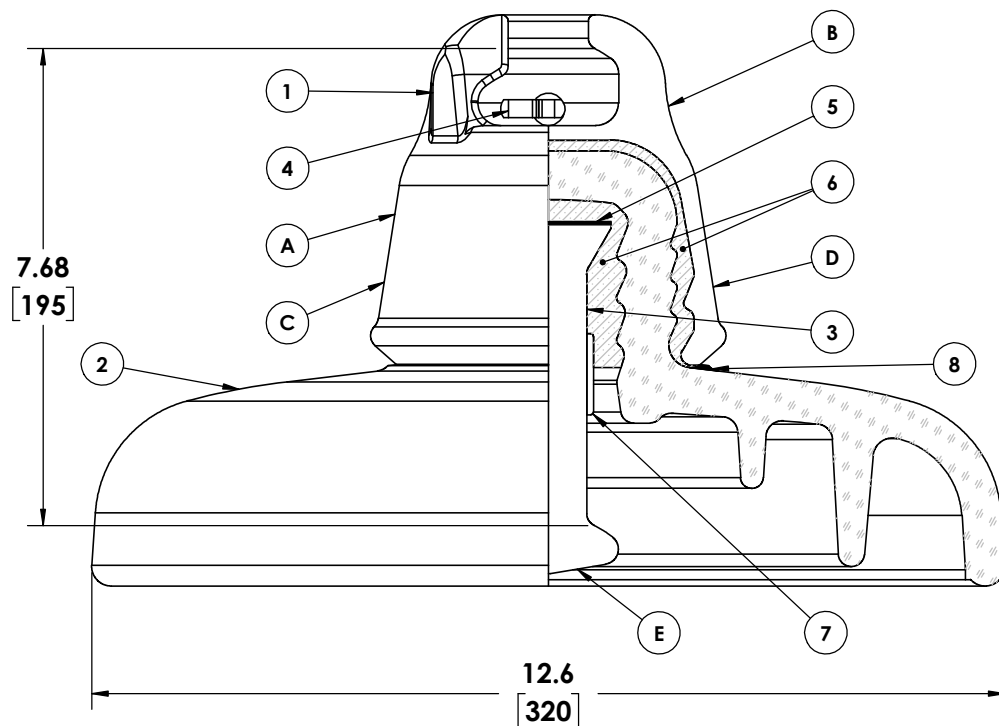
Diameter (D):	12.6 in	320 mm
Spacing:	7.68 in	195 mm
Leakage Distance:	19.1 in	485 mm

ELECTRICAL VALUES

Low Frequency Dry Flashover:	85 kV
Low Frequency Wet Flashover:	50 kV
Critical Impulse Flashover Positive (CIFO +):	130 kV
Critical Impulse Flashover Negative (CIFO -):	130 kV
Low Frequency Puncture Voltage:	130 kV
Radio Influence Voltage(RIV) Test Voltage:	10 kV
Maximum RIV at 1 MHz:	50 μV

MECHANICAL VALUES

Combined Electrical & Mechanical (M&E) Rating	67 klb	300 kN
Routine Test Mech. Proof Load:	34 klb	150 kN
Impact Strength:	400 in-lbs	45 N-m



A INSULATOR SUPPLIER MARKING **B** CAP SUPPLIER MARKING **C** TEST 34000 M&E 67000 MG300Z **D** YEAR OF MANUFACTURE YYYY **E** COUNTRY OF ORIGIN STAMP

Item#	Qty	Description	Material
1	1	Cap	Hot Dip Galvanized Cast Iron
2	1	Shell	Toughened Glass
3	1	Pin	Hot Dip Galvanized Forged Steel
4	1	Cotter Pin	Stainless Steel ANSI
5	1	Gasket	Asphalt Felt
6	- - -	Cement	Aluminous Cement, Hot Cured
7	1	Zinc Sleeve	Zinc
8	1	Coating	Pile