



MPS Catalog Number

Date 6/17/2025

Revision: C

MacLean Power Systems
7801 Park Place Rd., York, SC 29745 USA (803) 628-2100

P2 50 50 007 MX SS 004

Dimensions acc. To ANSI C29.19

BIL Rating: 150 kV TR227P

End Fittings
 Top End Fitting: 5 Inch Bolt Circle (Hot Dip Galvanized Cast Iron)
 Bottom End Fitting: 5 Inch Bolt Circle (Hot Dip Galvanized Cast Iron)

Material
 Number of Sheds: 4
 Rod Diameter: 2.5 Inches
 Weight Estimate: 26 lbs 12 kg
 Packaging: 18 Per Crate

Dimensional Values
 Height (L): 15.0 in 381 mm
 Rubber Length (X): 7.2 in 183 mm
 Shed Diameter (B): 7.7 in 196 mm
 Shed Spacing (S): 2.0 in 51 mm
 Dry Arc Distance: 10.6 in 269 mm
 Leakage Distance: 25.8 in 655 mm

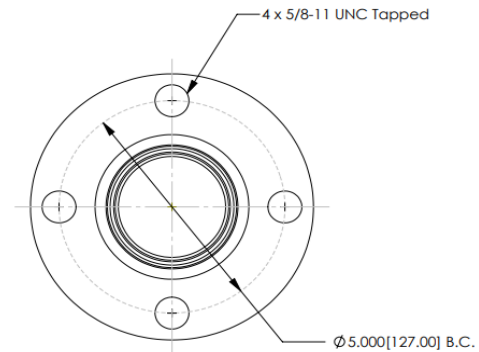
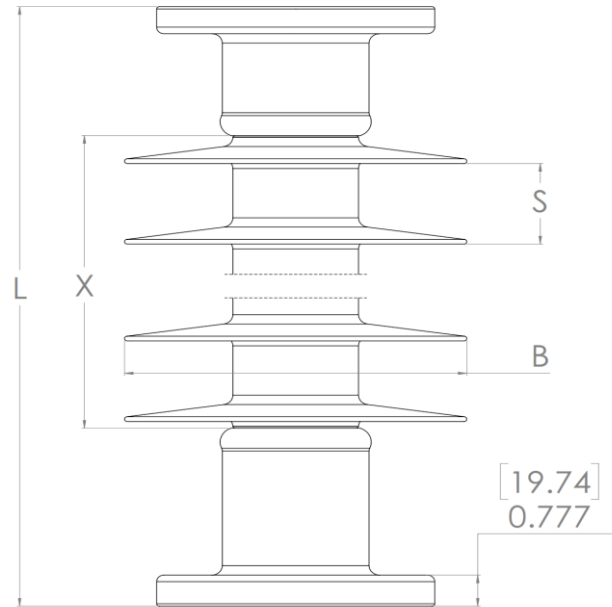
Electrical Values
 Low Freq. dry Flashover: 117 kV
 Low Freq. Wet Flashover: 98 kV
 Positive CIFO: 198 kV
 Negative CIFO: 260 kV
 Max RIV @ 1 MHz. Low-freq. test voltage 15kV

Min. Withstand 110 kV
 Min. Withstand 71 kV
 Min. Withstand 170 kV
 Min. Withstand 201 kV
 100 μV

Mechanical Values
 Specified Cant. Load (SCL): 11,000 lbs 48.9 kN
 Max. Design Cant. Load (MDCL): 5,500 lbs 24.5 kN
 Specified Tensile Load (STL): 17,500 lbs 78 kN
 Compression Strength 17,500 lbs 78 kN
 Deflection at 600 lbs. (2.7KN) .1 in 3 mm
 Torsional Strength 32,000 In-lbs 3,615 m.N

Dimension: inches [millimeters] Silicone Rubber, Sheath, & Dimensions comply with

NOTE: Drawing not actual depiction of insulator appearance ANSI C29.19 and CSA C156.2



*Deflection values based on working load of porcelain

This drawing contains confidential information that is the property of MacLean Power, L.L.C. ("MacLean"). Use of MacLean's confidential information without MacLean's express written consent is strictly prohibited and may expose you to legal liability. If you believe that you received this material in error, please destroy it or return it to "MacLean Power, L.L.C., 7801 Park Place Rd., York, South Carolina 29745, USA."