



MacLean Power Systems
7801 Park Place Rd., York, SC 29745 USA (803) 628-2100

MPS Catalog Number
Date 6/17/2025
Revision: C

P2 50 50 012 MX SS 006
Dimensions acc. To ANSI C29.19
BIL Rating: 200 kV TR231P

Top End Fitting:
Bottom End Fitting:

End Fittings
5 Inch Bolt Circle (Hot Dip Galvanized Cast Iron)
5 Inch Bolt Circle (Hot Dip Galvanized Cast Iron)

Number of Sheds:
Rod Diameter:
Weight Estimate:
Packaging:

Material
6
2.5 Inches
13 kg
18 Per Crate

Height (L):
Rubber Length (X):
Shed Diameter (B):
Shed Spacing (S):
Dry Arc Distance:
Leakage Distance:

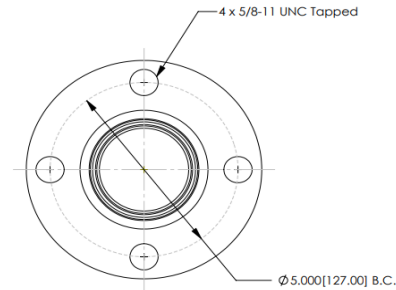
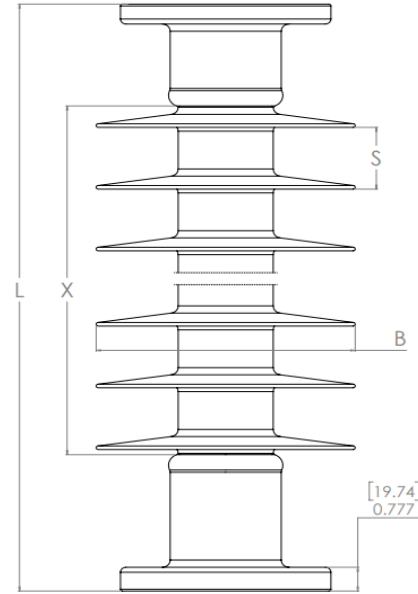
Dimensional Values
20.0 in 508 mm
12.0 in 305 mm
7.7 in 196 mm
2.0 in 51 mm
15.0 in 381 mm
39.3 in 998 mm

Low Freq. dry Flashover:
Low Freq. Wet Flashover:
Positive CIFO:
Negative CIFO:
Max RIV @ 1 MHz. Low-freq. test voltage 22kV

Electrical Values
158 kV
138 kV
225 kV
343 kV
100 μV

Specified Cant. Load (SCL):
Max. Design Cant. Load (MDCL):
Specified Tensile Load (STL):
Specified Compression Strength:
Deflection at 1600 lbs* (7.1kN):
Specified Torsional Strength:

Mechanical Values
10,000 lbs 44.5 kN
5,000 lbs 22.2 kN
17,500 lbs 78 kN
17,500 lbs 78 kN
.3 in 8 mm
32,000 In-lbs 3,615 m.N



Dimension: inches [millimeters]

Silicone Rubber, Sheath, & Dimensions comply with ANSI C29.19 and CSA C156.2

NOTE: Drawing not actual depiction of insulator appearance

This drawing contains confidential information that is the property of MacLean Power, L.L.C. ("MacLean"). Use of MacLean's confidential information without MacLean's express written consent is strictly prohibited and may expose you to legal liability. If you believe that you received this material in error, please destroy it or return it to "MacLean Power, L.L.C., 7801 Park Place Rd., York, South Carolina 29745, USA."

*Deflection values based on working load of porcelain