



MacLean Power Systems  
7801 Park Place Rd., York, SC 29745 USA (803) 628-2100

MPS Catalog Number

Date 10/17/2024

Revision: A

**P2 50 50 053 BX SS 026**

Dimensions acc. To ANSI C29.19

BIL Rating: 750 kV TR291

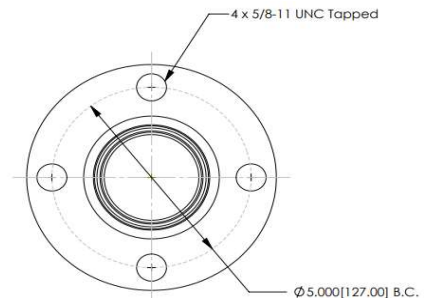
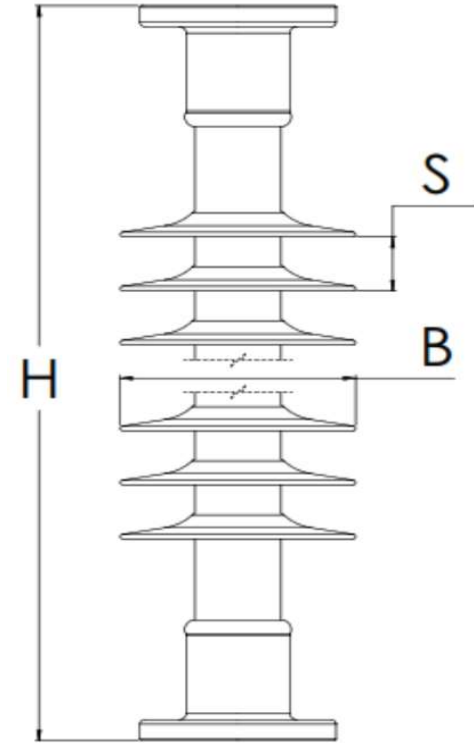
Top End Fitting:	5 Inch Bolt Circle (Hot Dip Galvanized Cast Iron)
Bottom End Fitting:	5 Inch Bolt Circle (Hot Dip Galvanized Cast Iron)

Number of Sheds:	26
Rod Diameter:	2.5 Inches
Weight Estimate:	27 kg
Packaging:	60 lbs 21 Per Crate

<b>Dimensional Values</b>	
Height (L):	62.0 in 1575 mm
Rubber Length (X):	53.0 in 1346 mm
Shed Diameter (B):	7.5 in 191 mm
Shed Spacing (S):	2.0 in 51 mm
Dry Arc Distance:	54.5 in 1384 mm
Leakage Distance:	166.5 in 4229 mm

<b>Electrical Values</b>		
Low Freq. dry Flashover:	512 kV	Min. Withstand 481 kV
Low Freq. Wet Flashover:	473 kV	Min. Withstand 376 kV
Positive CIFO:	891 kV	Min. Withstand 791 kV
Max RIV @ 1 MHz. Low-freq. test voltage	103kV	500 μV

<b>Mechanical Values</b>	
Specified Cant. Load (SCL):	2,969 lbs 13.2 kN
Max. Design Cant. Load (MDCL):	1,485 lbs 6.6 kN
Specified Tensile Load (STL):	17,500 lbs 78 kN
Specified Compression Strength	17,500 lbs 78 kN
Deflection at 480 lbs* (2.1KN)	1.7 in 43 mm
Specified Torsional Strength	18,000 In-lbs 2,034 Nm



\*Deflection values based on working load of porcelain

Dimension: inches [millimeters]

Silicone Rubber, Sheath, & Dimensions comply with  
ANSI C29.19 and CSA C156.2.

NOTE: Drawing not actual depiction of insulator appearance

This drawing contains confidential information that is the property of MacLean Power, L.L.C. ("MacLean"). Use of MacLean's confidential information without MacLean's express written consent is strictly prohibited and may expose you to legal liability. If you believe that you received this material in error, please destroy it or return it to "MacLean Power, L.L.C., 7801 Park Place Rd., York, South Carolina 29745, USA."