



MPS Catalog Number

Date 10/17/2024

Revision: A

MacLean Power Systems
7801 Park Place Rd., York, SC 29745 USA (803) 628-2100

P4 50 50 050 AX SS 019

Dimensions acc. To ANSI C29.19

BIL Rating: 750 kV TR295

Top End Fitting:
Bottom End Fitting:

End Fittings

5 Inch Bolt Circle (Hot Dip Galvanized Cast Iron)
5 Inch Bolt Circle (Hot Dip Galvanized Cast Iron)

Number of Sheds:
Rod Diameter:
Weight Estimate:
Packaging:

Material

19
3.5 Inches
85 lbs 39 kg
18 Per Crate

Height (L):
Rubber Length (X):
Shed Diameter (B):
Shed Spacing (S):
Dry Arc Distance:
Leakage Distance:

Dimensional Values

62.0 in 1575 mm
50.0 in 1270 mm
9.2 in 234 mm
2.5 in 64 mm
51.7 in 1313 mm
140.6 in 3571 mm

Low Freq. dry Flashover:
Low Freq. Wet Flashover:
Positive CIFO:
Max RIV @ 1 MHz. Low-freq. test voltage

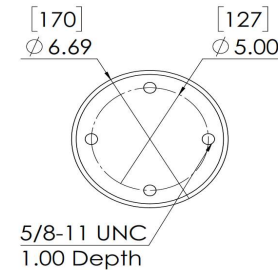
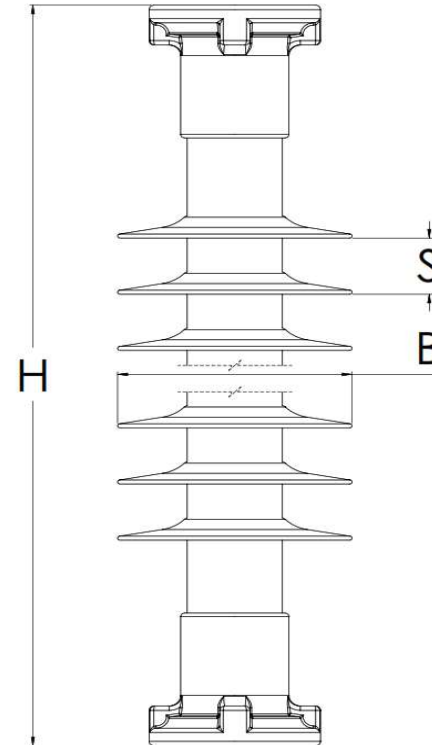
Electrical Values

488 kV Min. Withstand 458 kV
451 kV Min. Withstand 358 kV
847 kV Min. Withstand 753 kV
103kV 500 μV

Specified Cant. Load (SCL):
Max. Design Cant. Load (MDCL):
Specified Tensile Load (STL):
Specified Compression Strength
Deflection at 480 lbs* (2.1kN)
Specified Torsional Strength

Mechanical Values

6,628 lbs 29.5 kN
3,314 lbs 14.7 kN
25,500 lbs 113 kN
25,500 lbs 113 kN
.9 in 23 mm
18,000 In-lbs 2,034 Nm



*Deflection values based on working load of porcelain

Dimension: inches [millimeters]

Silicone Rubber, Sheath, & Dimensions comply with
ANSI C29.19 and CSA C156.2.

NOTE: Drawing not actual depiction of insulator appearance

This drawing contains confidential information that is the property of MacLean Power, L.L.C. ("MacLean"). Use of MacLean's confidential information without MacLean's express written consent is strictly prohibited and may expose you to legal liability. If you believe that you received this material in error, please destroy it or return it to "MacLean Power, L.L.C., 7801 Park Place Rd., York, South Carolina 29745, USA."