

# **TURBODRIVE™ CAST SOCKET DRIVE ANCHOR**

## **OVERVIEW**

The TurboDrive™ Cast Socket Drive Anchor from MacLean Power Systems is a power-installed screw anchor designed for fast installation, high strength, and simplified anchoring systems. Its fully cast construction and socket drive installation enable reliable performance across a wide range of soil conditions while reducing installation complexity for utility crews.

## **KEY FEATURES**

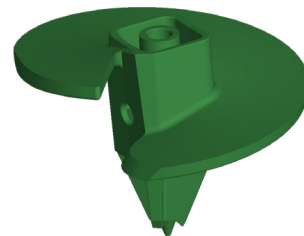
- **Socket Drive Installation:** Simplifies installation and reduces required tooling
- **Reduced SKU Complexity:** Fewer product variations allow broader application coverage
- **Beveled Edge:** Improves ground penetration and speeds installation
- **Fluted Drive Tip:** Helps break through rocks and dense soil
- **Fully Cast Construction:** Eliminates welds for improved reliability
- **Made in the USA:** Domestic manufacturing with short lead times

## **TECHNICAL HIGHLIGHTS**

- Designed to perform across multiple soil conditions, including rocky environments
- ½-inch helix configuration provides dependable holding capacity
- Constructed with a high-quality steel hub for structural durability
- Engineered to support efficient production, testing, and manufacturing consistency

## **ORDERING & AVAILABILITY**

- Refer to MPS website for detailed product information and availability
- For items not listed, please contact MPS Customer Service



**LEADING THE WAY™**

[www.maclepower.com](http://www.maclepower.com) | 855.MPS.SHIP | Fort Mill, SC 29715

**2-1/4" TURBO DRIVE SOCKET ANCHORS -**  
**10,000 FT-LB INSTALLATION TORQUE - 1/2" THICK HELIX**

CATALOG NUMBER	WEIGHT LBS (KG)	HELIX DIAMETER IN (CM)	TAPPED FOR ROD SIZE IN (CM)
TDH225-104	16.7 (7.6)	10 (25.4)	3/4 or 1 (1.9 or 2.5)
TDH225-112	21.6 (9.8)	12 (30.5)	5/8 (1.6)
TDH225-114	21.6 (9.8)	12 (30.5)	3/4 or 1 (1.9 or 2.5)
TDH225-134	27 (12.2)	14 (35.6)	3/4 or 1 (1.9 or 2.5)
TDH225-82	12.7 (5.8)	8 (20.3)	5/8 (1.6)
TDH225-84	12.7 (5.8)	8 (20.3)	3/4 or 1 (1.9 or 2.5)

**2-1/4" TURBO DRIVE SOCKET ANCHORS -**  
**10,000 FT-LB INSTALLATION TORQUE - 3/8" THICK HELIX**

CATALOG NUMBER	WEIGHT LBS (KG)	HELIX DIAMETER IN (CM)	TAPPED FOR ROD SIZE IN (CM)
TDH225-104	14.2 (6.4)	10 (25.4)	3/4 or 1 (1.9 or 2.5)
TDH225-114	17.9 (8.1)	12 (30.5)	3/4 or 1 (1.9 or 2.5)
TDH225-134	22.4 (10.2)	14 (35.6)	3/4 or 1 (1.9 or 2.5)
TDH225-82	11.2 (5.1)	8 (20.3)	5/8 (1.6)
TDH225-84	11.2 (5.1)	8 (20.3)	3/4 or 1 (1.9 or 2.5)

**LEADING THE WAY™**

www.maclepower.com | 855.MPS.SHIP | Fort Mill, SC 29715

