

MPS Catalog Number: **ZHP003-0000000**
Date: **03/02/2022**
By: **Laurel Wallace**

Electricals Values

Rating kV-RMS:	03	
MCOV kV-RMS:	2.60	
F.O.W. kV-CREST:	11.5	
SwitchSurge kV-CREST:	7.50	
Creep:	7.96 in	202 mm
Strike:	5.47 in	139 mm

Dimensions & Physical Characteristics

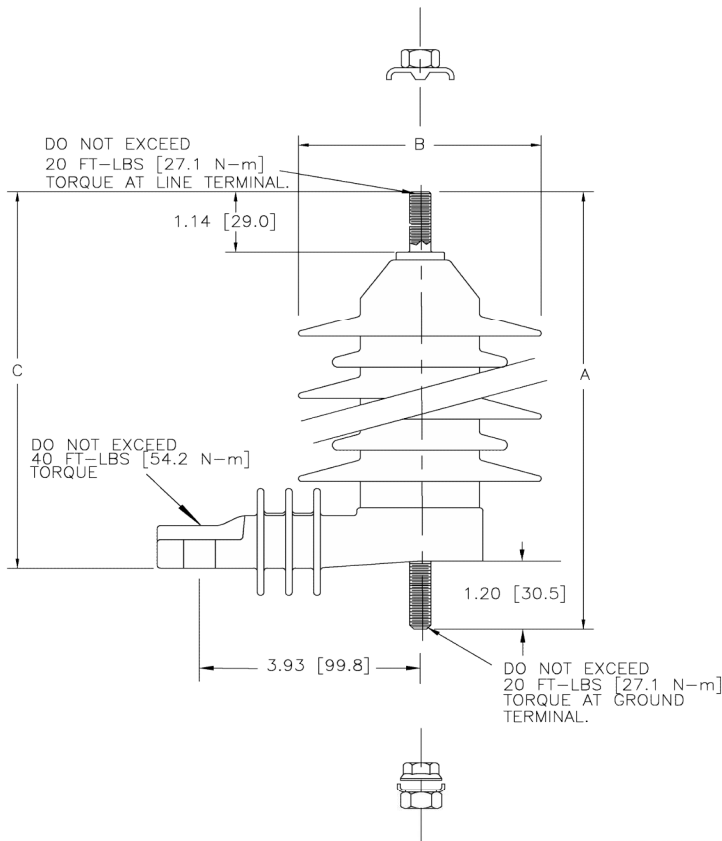
Dimension A:	6.52 in	166 mm
Dimension B:	4.30 in	109 mm
Dimension C:	5.40 in	137 mm
Weight:	2.30 lbs	1.04 kg

Max Discharge Voltage (kV-CREST)

1.5 kA	8.4	20 kA	11.6
2.5 kA	8.6	40 kA	13.7
3.0 kA	8.7		
5.0 kA	9.2		
10 kA	10.2		

Special Options

3/8-16 hardware.



This drawing contains confidential information that is the property of MacLean Power, L.L.C. ("MacLean"). Use of MacLean's confidential information without MacLean's express written consent is strictly prohibited and may expose you to legal liability. If you believe that you received this material in error, please destroy it or return it to "MacLean Power, L.L.C., 7801 Park Place Rd., York, South Carolina 29745, USA."