

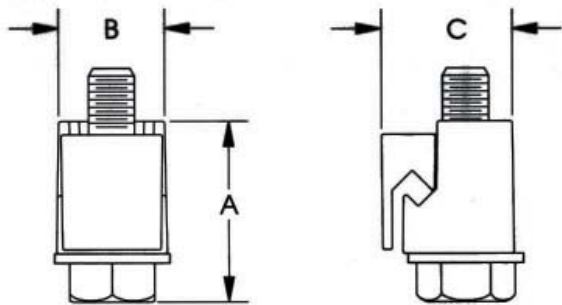


Bronze Vise Connectors



Features

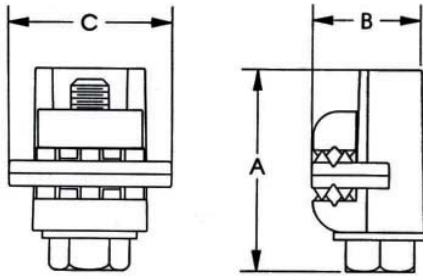
- Interlocking components ensure a long term, vibration proof connection
- One Piece, side opening design eliminates loose parts, cross threading, and eases installation on run conductor
- Wide range allows for minimal inventory
- Easy to install with gloves or hot sticks
- Connectors can be installed on structures, cabinets and enclosures for grounding applications
- Four NEW ground lug designs available



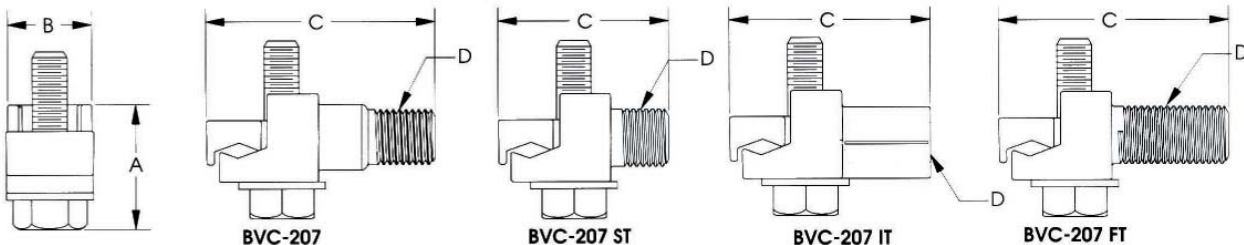
Catalog Number	Conductor Range		A	B	C	Bolt Thread Size	Bolt Hex Head Size
	Max	Min					
BVC-6	#6 STR	#10 SOL	0.88	0.64	0.73	1/4	3/8
BVC-4	#4 STR	#8 SOL	1.13	0.73	0.83	5/16	9/16
BVC-2	#2 SOL	#6 SOL	1.33	0.81	0.93	5/16	9/16
BVC-2S	#2 STR	#5 SOL	1.52	0.79	0.93	5/16	9/16
BVC-20	1/0 STR	#4 SOL	1.72	0.80	1.03	5/16	9/16
BVC-20S	2/0 STR	#3 SOL	1.91	0.94	1.19	3/8	9/16
BVC-40	4/0 STR	1/0 STR	2.14	0.95	1.27	3/8	9/16

Notes:

For Cable Range - each connector will accept two conductors listed within the range listed, in any combination



Catalog Number	Diameter		A	B	C	Bolt Thread Size	Bolt Hex Head Size
	Messenger	Ground Tap					
BVC-167P	.146-.312	.146-.312	1.56	0.89	1.27	5/16	9/16



Catalog Number	Conductor Range		A	B	C	D	Bolt Thread Size	Bolt Hex Head Size
	SOL	STR						
BVC-207	#8	1/0	1.02	0.77	2.00	1/2-13	5/16	9/16
BVC-207 IT	#8	1/0	1.02	0.77	1.75	3/8-13	5/16	9/16
BVC-207 ST	#8	1/0	1.02	0.77	1.50	1/2-13	5/16	9/16
BVC-207 FT	#8	1/0	1.02	0.77	2.00	1/2-13	5/16	9/16