

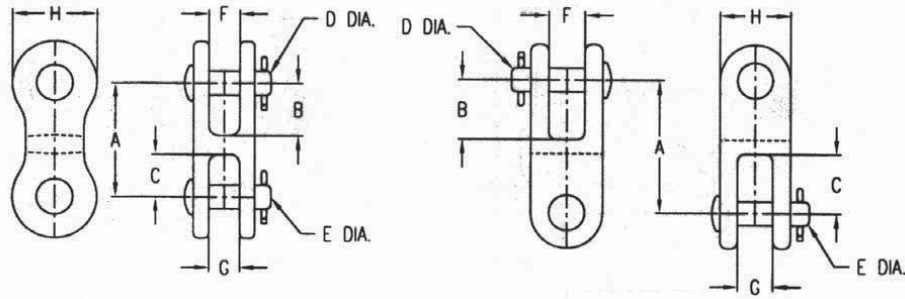


Clevis Type Insulator Fittings

Clevis - Clevis

Material

Ductile iron hot dip galvanized



Catalog Number	A	B	C	D	E	F	G	H	Ultimate Strength (lbs)	Weight /100 (lbs)
CCR-55	3 1/2	1 9/16	1 9/16	5/8	5/8	15/16	15/16	1 7/8	30000	208
CC-55A	3 1/2	1 9/16	1 9/16	5/8	5/8	13/16	13/16	1 7/8	35000	242
CC-66	4 1/8	1 3/4	1 3/4	3/4	3/4	15/16	15/16	--	40000	400
CCR-66A	5 1/4	2 3/8	2 3/8	3/4	3/4	1 1/16	1 1/16	2 1/8	45000	460
CC-77A	6	2 11/16	2 11/16	7/8	7/8	2	1	--	60000	--

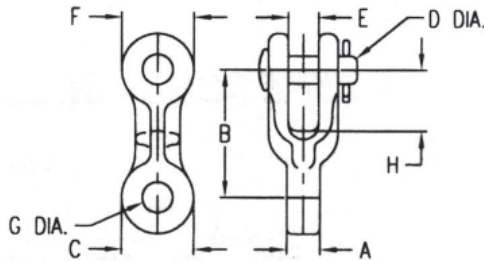
Notes:

1) For bolt, nut and cotter instead of clevis pin and cotter, add suffix "-BC" to catalog number

Clevis - Eye, Standard

Material

Ductile iron hot dip galvanized



Catalog Number	A	B	C	D	E	F	G	H	Ultimate Strength (lbs)	Weight /100 (lbs)
SCE-55-500	1/2	2 1/2	1 3/4	5/8	16/16	1 3/4	11/16	1 1/4	18000	130
SCE-55-625	5/8	2 7/8	1 15/16	5/8	13/16	1 5/8	11/16	1 3/8	25000	135
SCE-55-750	3/4	2 7/8	1 5/8	5/8	11/16	1 5/8	11/16	1 3/8	25000	136
SCE-55-875	7/8	2 7/8	1 5/8	5/8	11/16	1 5/8	11/16	1 3/8	25000	138
SCE-55-875A	7/8	3 13/16	1 3/4	5/8	13/16	1 7/8	11/16	1 3/4	25000	139
SCE-55-1125	1 1/8	2 7/8	1 5/8	5/8	11/16	1 5/8	11/16	1 3/8	25000	140
SCE-55-1375	1 3/8	2 1/2	1 1/2	5/8	13/16	1 3/4	11/16	1 1/4	30000	158
SCE-55-1375A	1 3/8	2 7/8	1 7/16	5/8	11/16	1 5/8	11/16	1 3/8	30000	160
SCE-55-1500	1 1/2	2 1/2	1 1/2	5/8	11/16	1 3/4	11/16	1 3/4	30000	135
SCE-55-1625	1 5/8	2 1/2	1 1/2	5/8	5/8	1 3/4	11/16	1 1/4	30000	162
SCE-55-1750	1 3/4	2 7/8	1 1/2	5/8	11/16	1 5/8	11/16	1 1/4	30000	162
SCE-55-2000	2	2 7/8	1 5/8	5/8	11/16	1 7/8	11/16	1 7/16	30000	180
SCE-55-2187	2 3/16	2 7/8	1 5/8	5/8	11/16	1 7/8	11/16	1 7/16	30000	210
SCE-55-2500	2 1/2	2 7/8	1 5/8	5/8	11/16	1 7/8	11/16	1 3/16	30000	214
SCE-56-625	5/8	2 15/16	2	5/8	3/4	2	16/16	1 3/16	30000	140
SCE-56-1125	1 1/8	3 1/8	1 7/8	5/8	7/8	1 3/4	13/16	1 1/2	30000	190
SCI-56-1375	1 3/8	2 1/2	1 11/16	5/8	13/16	1 3/4	13/16	1 1/8	30000	186
SCE-56-1625	1 5/8	2 7/8	1 1/2	5/8	13/16	1 3/4	13/16	1 11/16	30000	190
SCE-57-2000	2	2 7/8	1 3/4	5/8	11/16	1 3/4	15/16	1 11/16	30000	192
SCE-66-1625	1 5/8	2 7/8	1 3/4	3/4	7/8	2	13/16	1 3/4	35000	172
SCE-66-2000	2	3 1/2	2 1/8	3/4	1	2 1/8	13/16	2	40000	215

Notes:

1) For bolt, nut and cotter instead of clevis pin and cotter, add suffix "-BC" to catalog number