

MPS Catalog Number:

S1 90 80 066 MA AL 043

Date:

01/24/2014

END FITTINGS

Tower End Fitting:

Eye (Forged Steel)

Line End Fitting:

Ball (Forged Steel) (ANSI 52-5)

MATERIAL

Corona Ring (Tower):

None

Corona Ring (Line):

8" Corona Ring

Corona Rings are recommended for applications of 230 kV and above

Number of Sheds:

21 large 22 standard

Rod Diameter:

16 mm

Weight Estimate:

14.9 lbs 6.8 kg

DIMENSIONAL VALUES

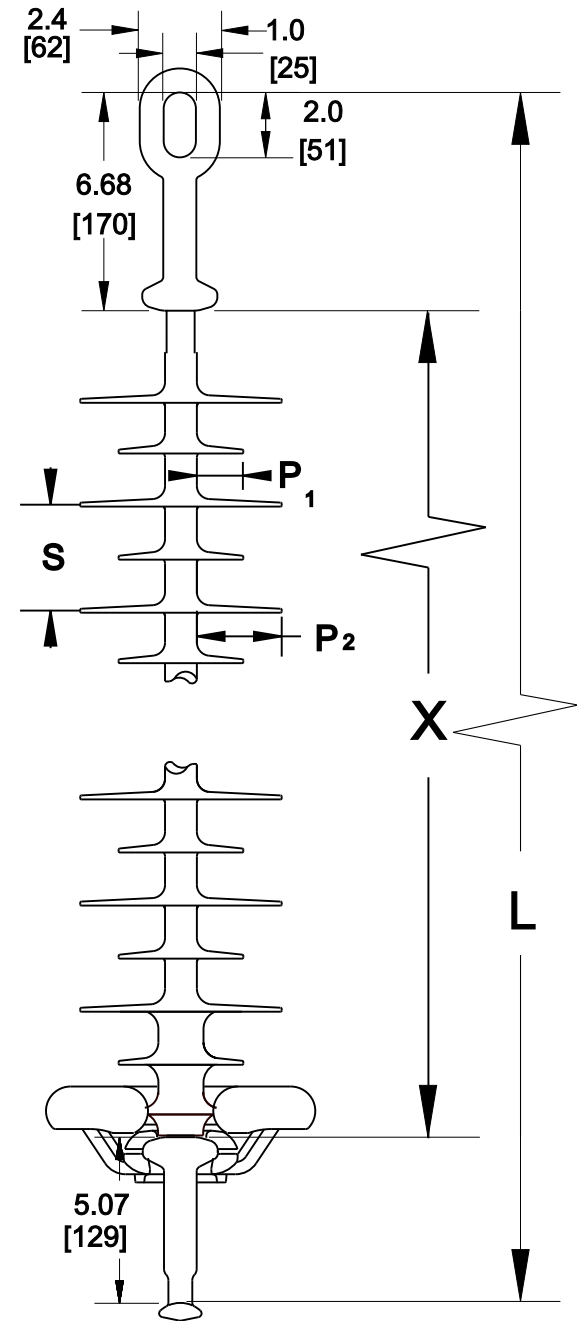
| | | |
|----------------------------|---------|----------|
| Section Length (L): | 78.2 in | 1,986 mm |
| Rubber Length (X): | 66.4 in | 1,687 mm |
| Standard Shed Height (P1): | 1.5 in | 38 mm |
| Large Shed Height (P2): | 2 in | 51 mm |
| Projection Ratio (S/P): | - | 1.5 |
| Shed Spacing (S): | 3 in | 76 mm |
| Dry Arc Distance: | 66.1 in | 1,679 mm |
| Leakage Distance: | 195 in | 4,953 mm |

ELECTRICAL VALUES

| | | | |
|----------------------------------|----------|-----------------|----------|
| 60 Hz Dry Flashover: | 644 kV | Min. Withstand: | 588 kV |
| 60 Hz Wet Flashover: | 563 kV | Min. Withstand: | 490 kV |
| Pos. Critical Impulse Flashover: | 1,084 kV | Min. Withstand: | 956 kV |
| Neg. Critical Impulse Flashover: | 1,140 kV | Min. Withstand: | 1,010 kV |

MECHANICAL VALUES

| | | |
|-----------------------------|------------|----------|
| Specified Mech. Load (SML): | 25,000 lbs | 111.2 kN |
| Routine Test Load (RTL): | 12,500 lbs | 55.6 kN |



This drawing contains confidential information that is property of MacLean Power L.L.C ('MacLean'). Use of MacLean's confidential information without MacLean's express written consent is strictly prohibited and may expose you to legal liability. If you believe that you received this material in error, please destroy it or return it to 'MacLean Power, L.L.C., 7801 Park Place Rd, York, SC, 29745, USA.'

Dimensions: inches [millimeters]

Note: Drawing not actual depiction of insulator appearance

Silicone Rubber Sheath & Sheds
Complies with applicable ANSI and IEC standards.